

Computational Physics

Group of Prof. Dr. Ulrich Wolff

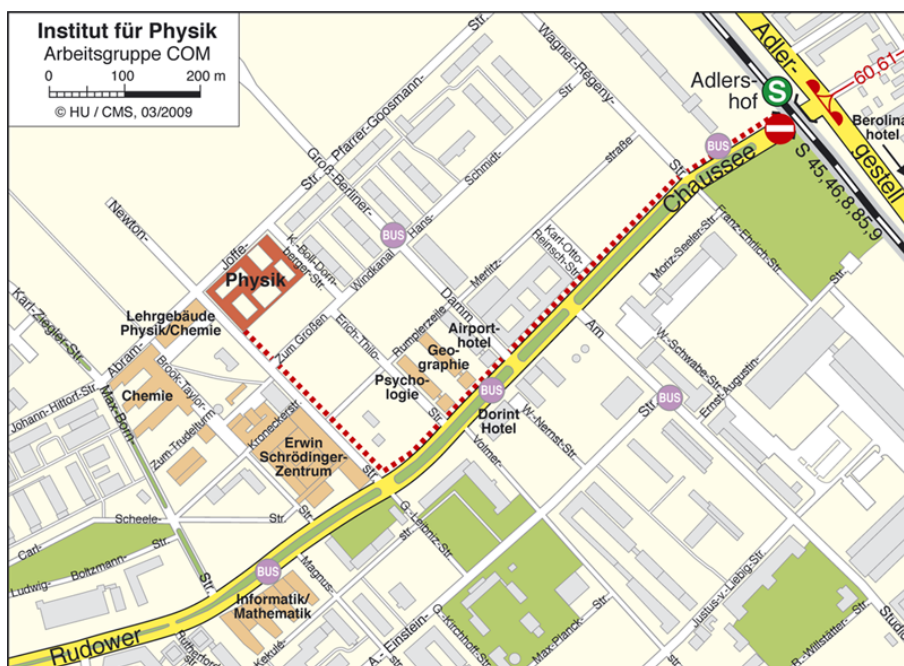
Address

Institut für Physik
Humboldt Universität zu Berlin
Newtonstrasse 15
12489 Berlin, Germany

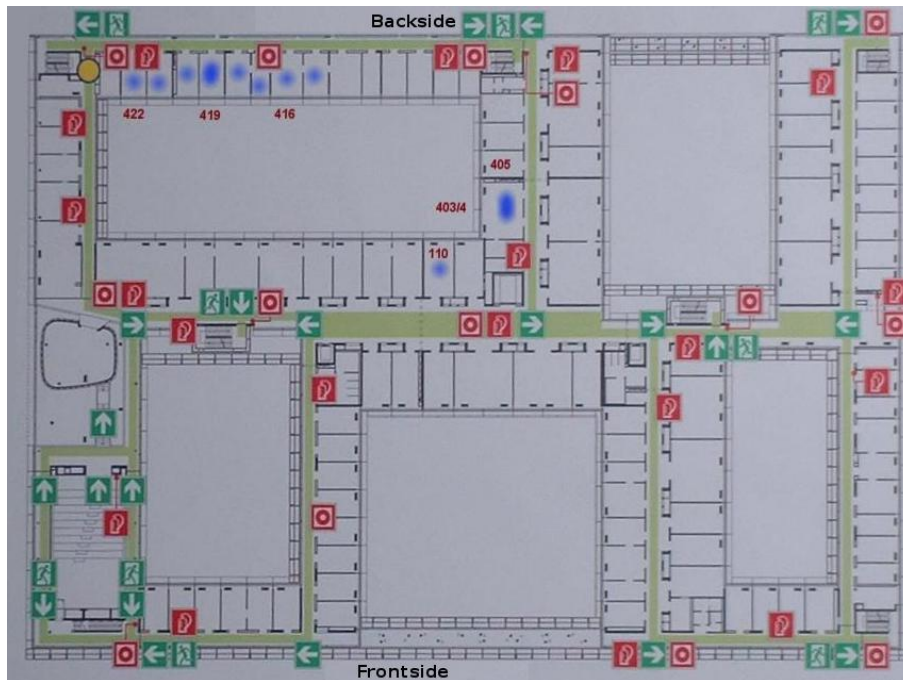
Phone: +49 30 2093 7653
Fax: +49 30 2093 4725
Email: uwolff@physik.hu-berlin.de

Location

Our group is located in the new Department of Physics of the Humboldt University near the S-Bahn station **Adlershof**. Starting from the station, please follow the red dotted line on the map below. The office rooms are in the physics building (**Physik**).



Take the stairs to the 1st floor. Our offices are marked blue in the map below.



Limited S-Bahn service due to technical problems

In the last months, the S-Bahn service in Berlin has been limited due to technical difficulties. The following connections take that into account, so you should have no difficulties reaching Adlershof by following the instructions on this page.

Arrival at Train Station Berlin Hauptbahnhof or Ostbahnhof

Buy a "**Berlin AB Einzelfahrausweis**"-ticket and don't forget to **validate** (entwerten) it. Then take one of the following Trains to S-Bahn Station **Ostkreuz**: **S7** (direction S Ahrensfelde Bhf), **S75** (direction S Wartenberg) or **S5** (direction S Strausberg Bhf). At **Ostkreuz**, take the **S9** (direction Flughafen (Airport) Schönefeld) or the **S8** (direction S Grünau) and exit at **Adlershof**.

Follow the Rudower Chaussee as depicted on the map above (red line). The trip will take you about 35 minutes from Hauptbahnhof and about 25 minutes from Ostbahnhof, plus a ten minute walk.

Arrival at Schönefeld Airport

There are two options:

1. S-Bahn: Buy a "**Berlin BC Einzelfahrausweis**"-ticket and don't forget to **validate** (entwerten) it. Take **any S-Bahn** at the S-Bahn station Flughafen Berlin-Schönefeld, direction Gesundbrunnen or Zoologischer Garten. Exit at the station **Adlershof**. Follow the path depicted on the map above. The whole trip will take you about 25 minutes.
2. Bus to Adlershof: Take the **Bus 162** (direction S Adlershof) that is directly leaving from the

terminal. Exit at **Walther-Nernst-Straße** for the Department of Physics, for the Dorint Hotel or for the Airport Hotel or exit at S Adlershof for the S-Bahn or the Berolina Hotel. Follow the path depicted on the map above. The whole trip will take you about 30 minutes.

Arrival at Tegel Airport

Take the bus **TXL** (leaving directly in front of the airport building), and buy a "**Berlin AB Einzelfahrausweis**"-ticket from the driver when you get on it. Exit at the station **S Beusselstrasse**. Then take the S-Bahn **Ringbahn S 41** to **Treptower Park**. At **Treptower Park**, take the **S9** (direction Flughafen (Airport) Schönefeld) or the **S8** (direction S Grünau) and exit at **Adlershof**.

Follow the Rudower Chaussee as depicted on the map above (red line). The whole trip will take you about 1 hour.

Further Information

Find your connection on the website of the local public transport providers:
<http://www.vbb-fahrinfo.de>