

Computational Physics

Group of Prof. Dr. Ulrich Wolff

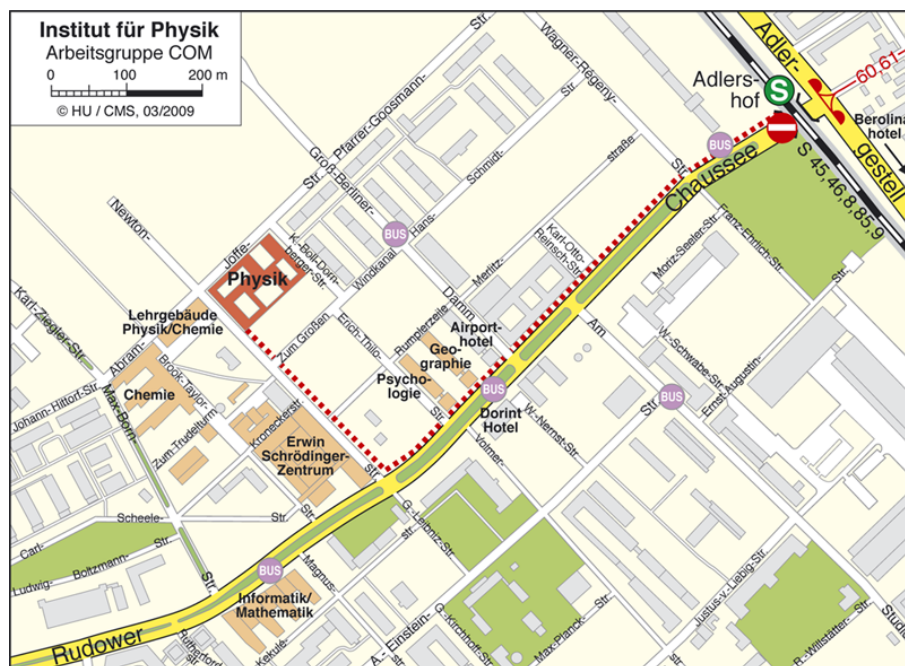
Address

Institut für Physik
Humboldt Universität zu Berlin
Newtonstrasse 15
12489 Berlin, Germany

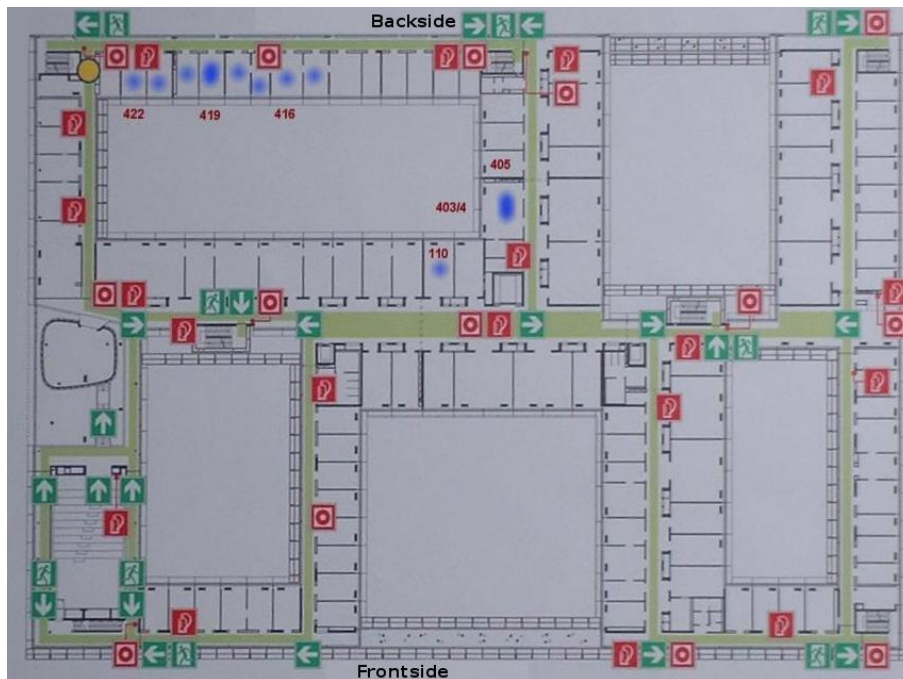
Phone: +49 30 2093 7653
Fax: +49 30 2093 4725
Email: uwolff@physik.hu-berlin.de

Location

Our group is located in the new Department of Physics of the Humboldt University near the S-Bahn station **Adlershof**. Starting from the station, please follow the red dotted line on the map below. The office rooms are in the physics building (**Physik**).



Take the stairs to the 1st floor. Our offices are marked blue in the map below.



How to get to S-Bahn Adlershof from...

... Hauptbahnhof or Ostbahnhof

Buy a "**Berlin AB Einzelfahrausweis**"-ticket and don't forget to **validate** (entwerten) it. There are two options:

1. Direct Connection: Take the **S9** (direction Flughafen (Airport) Schönefeld) and exit at **Adlershof**.
2. Change train at Ostkreuz: Take the **S7** (direction Ahrensfelde), at **Ostkreuz** change to the **S8** (direction Grünau/Zeuthen) and exit at **Adlershof**.

Follow the Rudower Chaussee as depicted on the map above (red dotted line). The trip will take you about 30 minutes.

... Schönefeld Airport

There are two options:

1. S-Bahn: Buy a "**Berlin BC Einzelfahrausweis**"-ticket and don't forget to **validate** (entwerten) it. Take **any S-Bahn** at the S-Bahn station Flughafen Berlin-Schönefeld, direction Gesundbrunnen or Zoologischer Garten. Exit at the station **Adlershof**. Follow the path depicted on the map above. The whole trip will take you about 25 minutes.

2. Bus to Adlershof: Take the **Bus 162** (direction S Adlershof) that is directly leaving from the terminal. Exit at **Walther-Nernst-Straße** for the Department of Physics, for the Dorint Hotel or for the Airport Hotel or exit at S Adlershof for the S-Bahn or the Berolina Hotel. Follow the path depicted on the map above. The whole trip will take you about 30 minutes.

... Tegel Airport

Buy a "**Berlin AB Einzelfahrausweis**"-ticket and don't forget to validate (entwerten) it. Take the bus **TXL** (leaving directly in front of the airport building) and exit at the station **Hauptbahnhof**. Now, have a look at the **instructions above**. The whole trip will take you about 1 hour.

Further Information

Find your connection on the website of the local public transport providers:

<http://www.vbb-fahrinfo.de>