

# Fig 3.33: Surface Barrier Detector

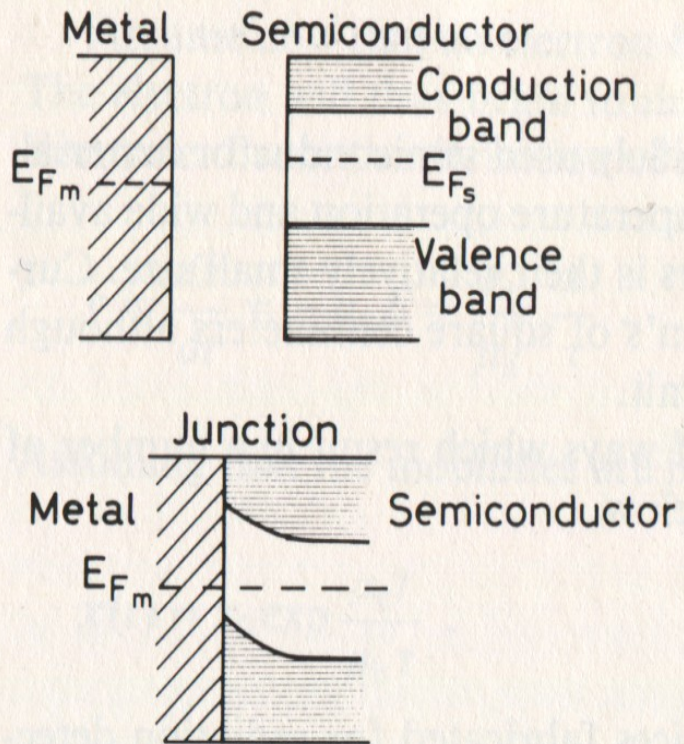


Fig. 10.11

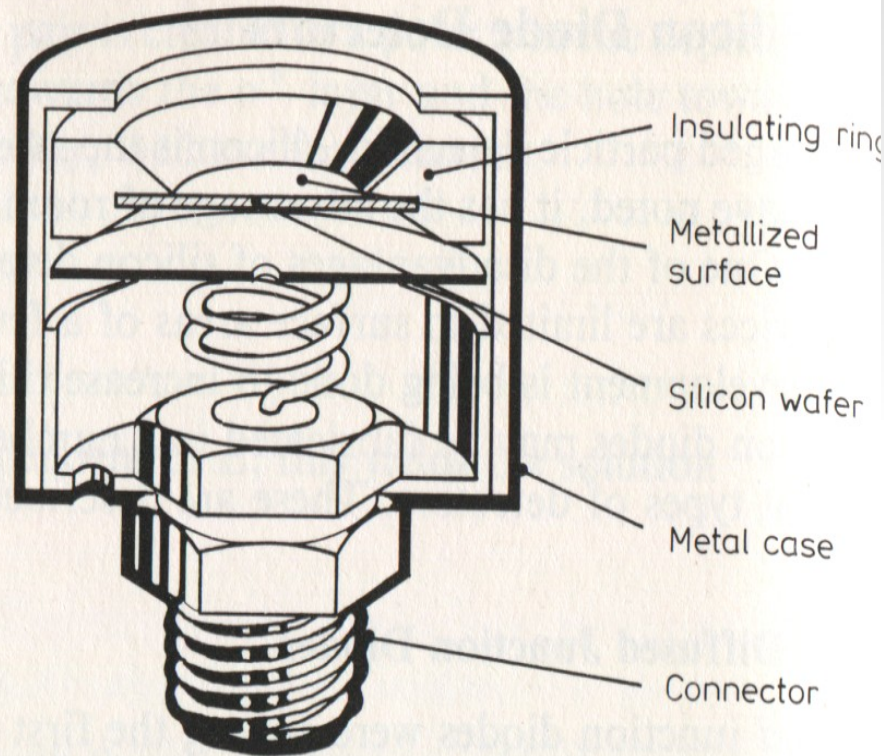
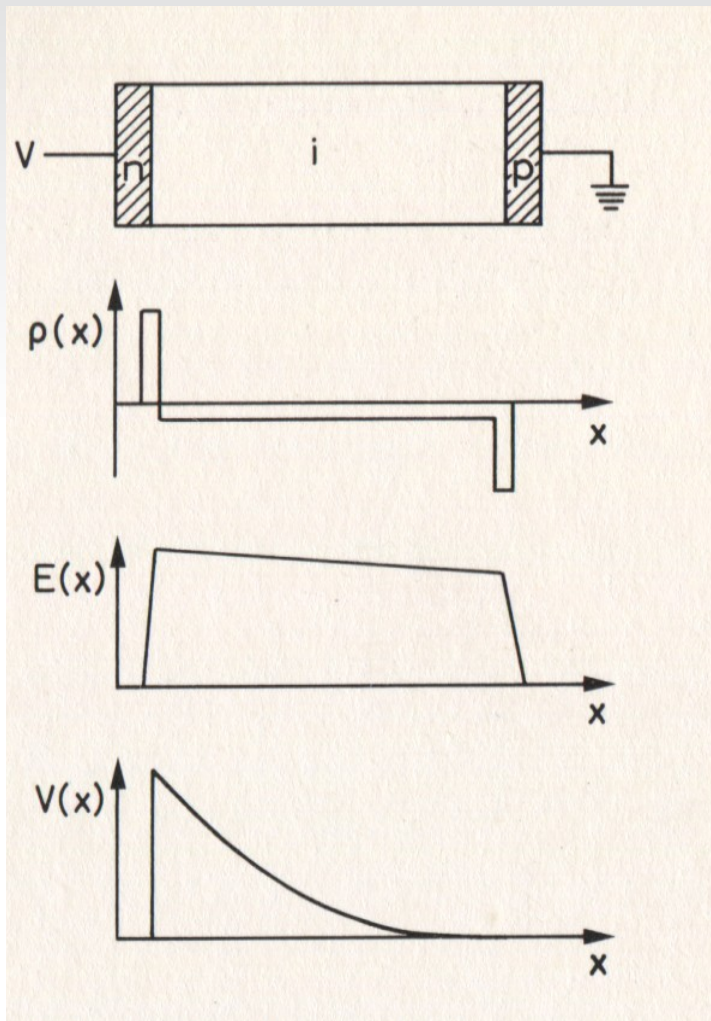


Fig. 10.12



# Fig 3.34: p-i-n-Detektor

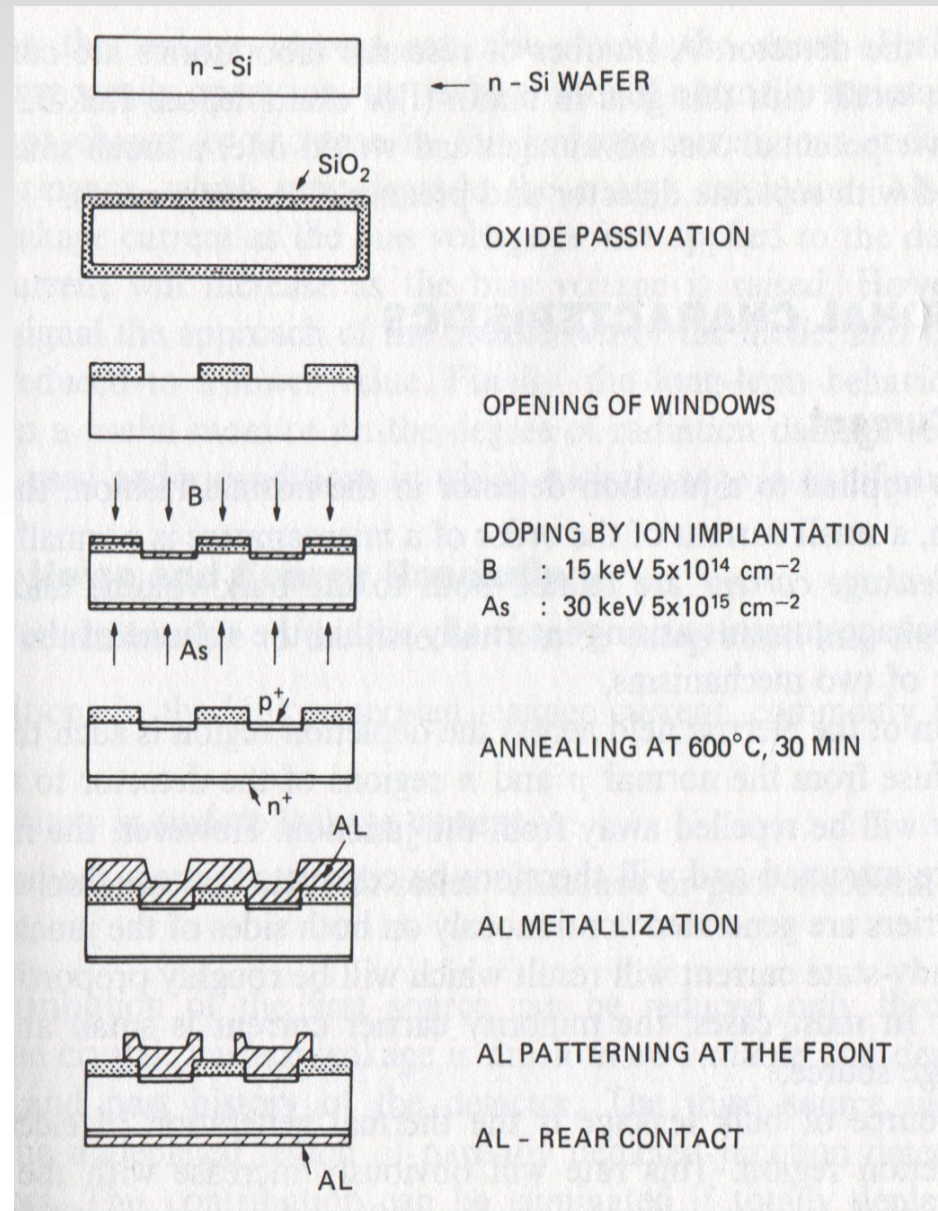


Landed on Mars !



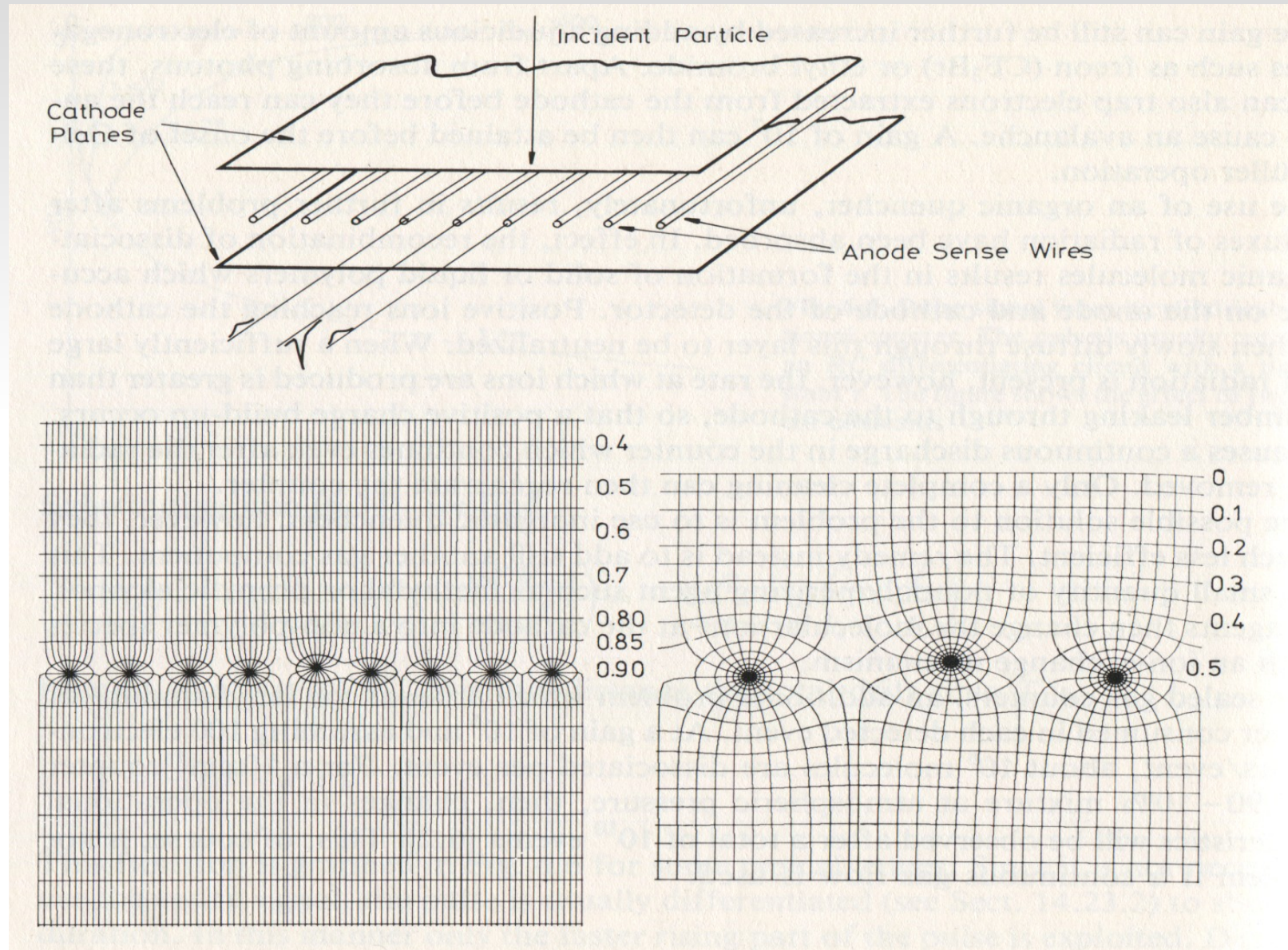


# Fig 3.35: Passivierte Si-Diode



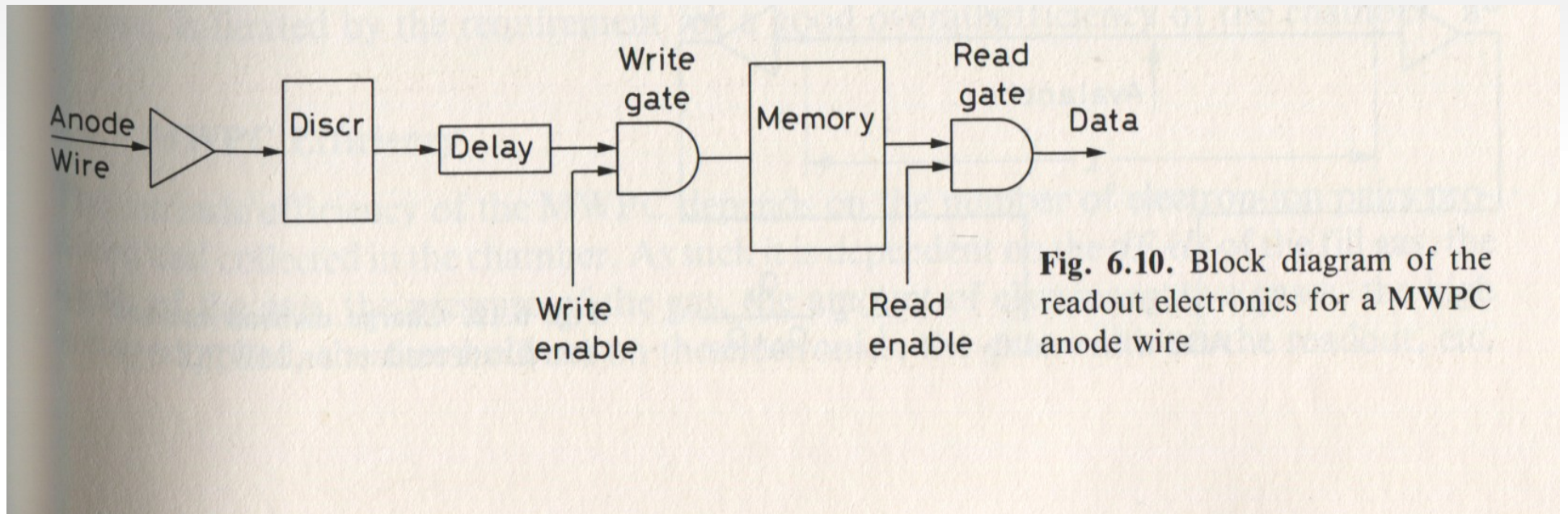


# Fig 4.1: MWPC

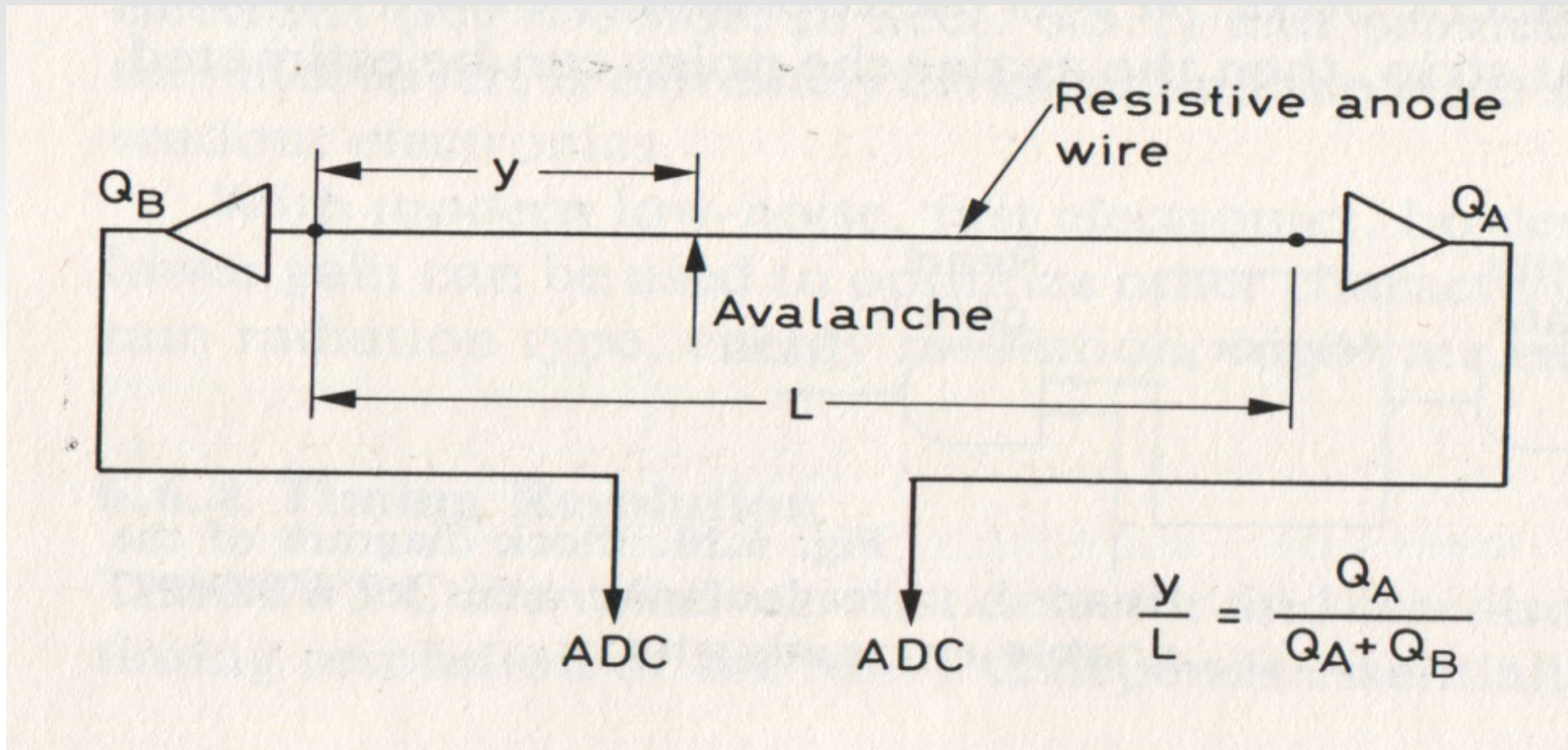




# Fig 4.2: Auslese eines MWPC-Drahtes

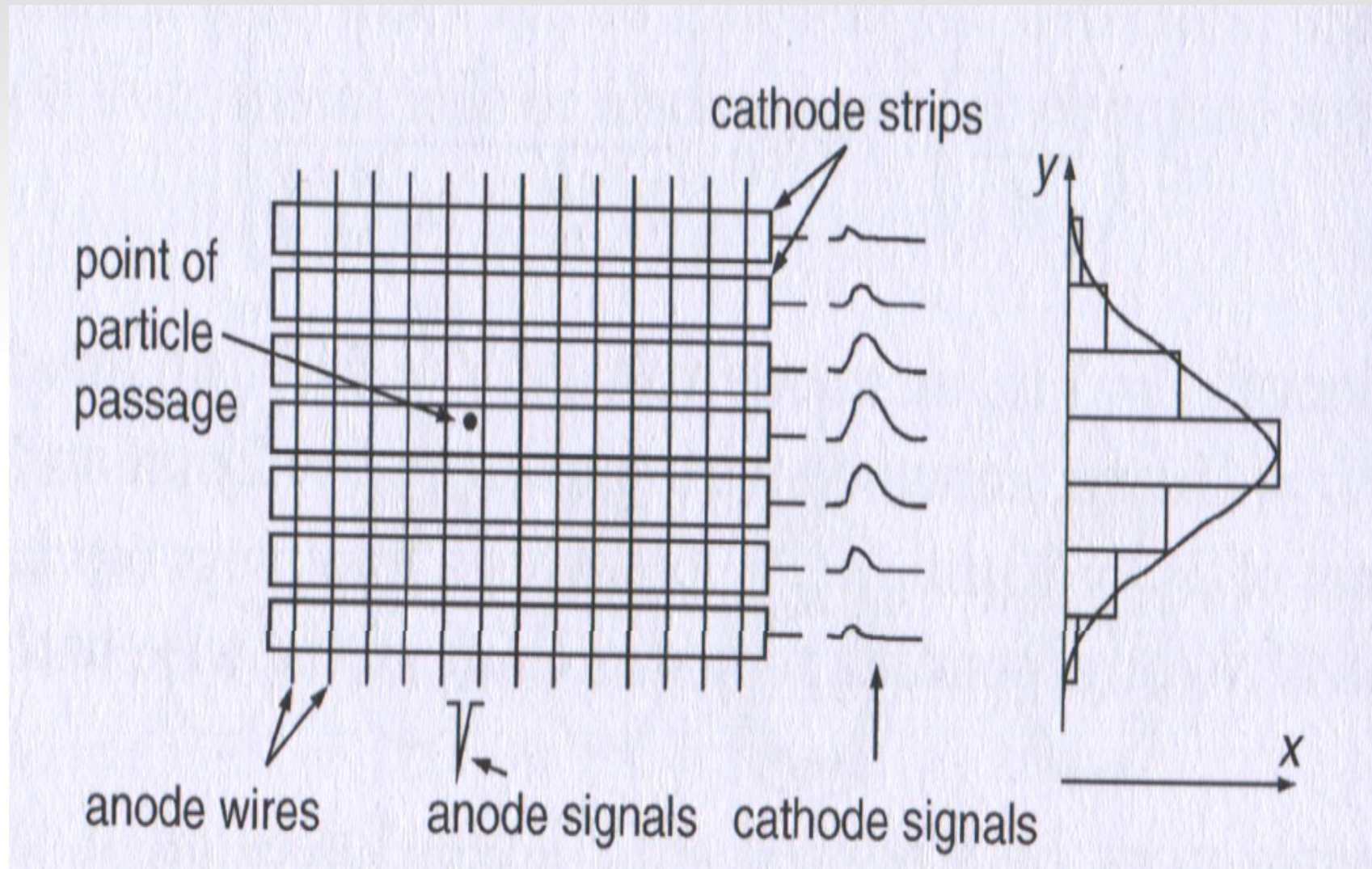


# Fig 4.3: Ladungsteilung

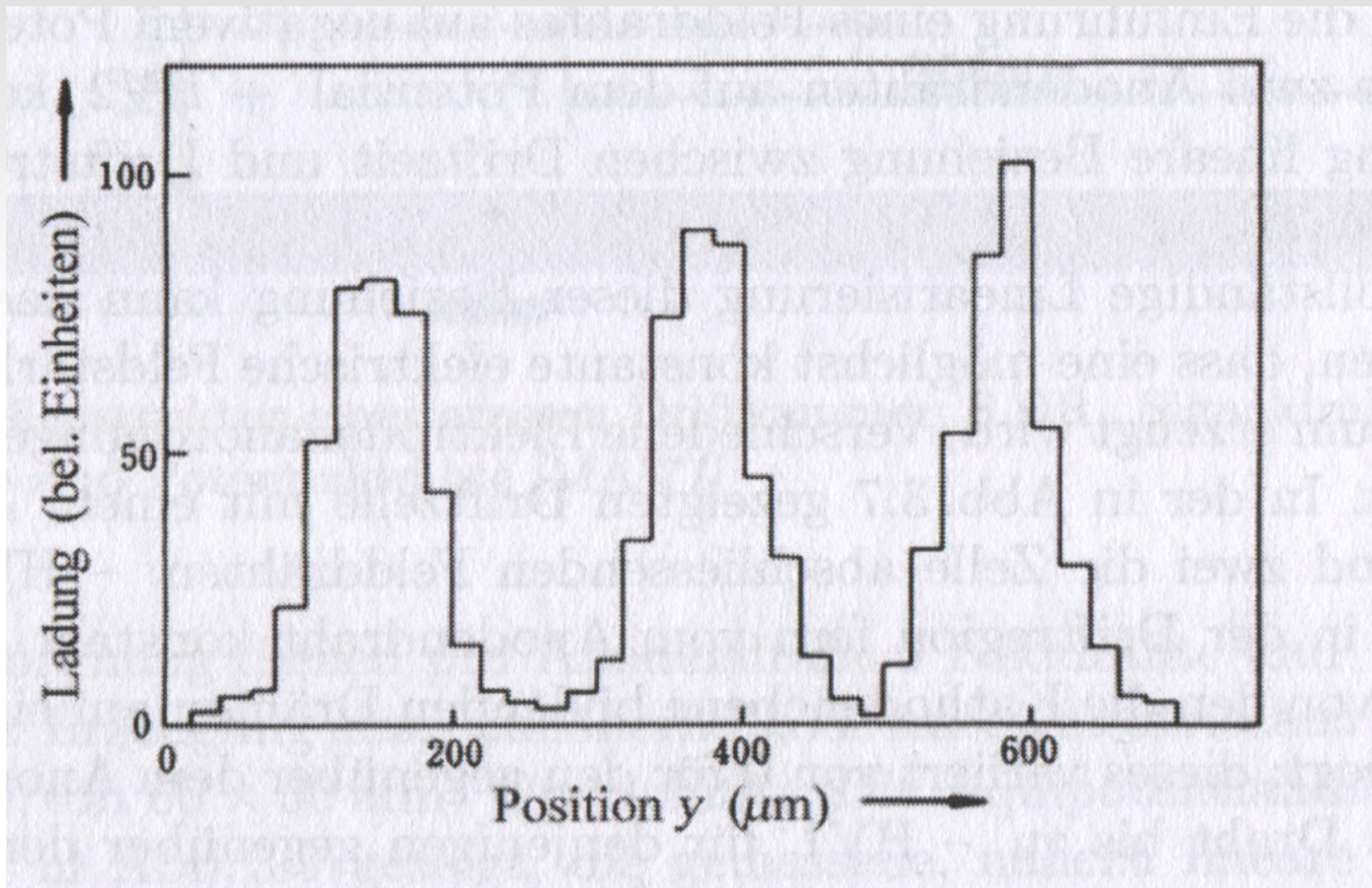




# Fig 4.4a: Kathodenstreifen- Auslese einer MWPC

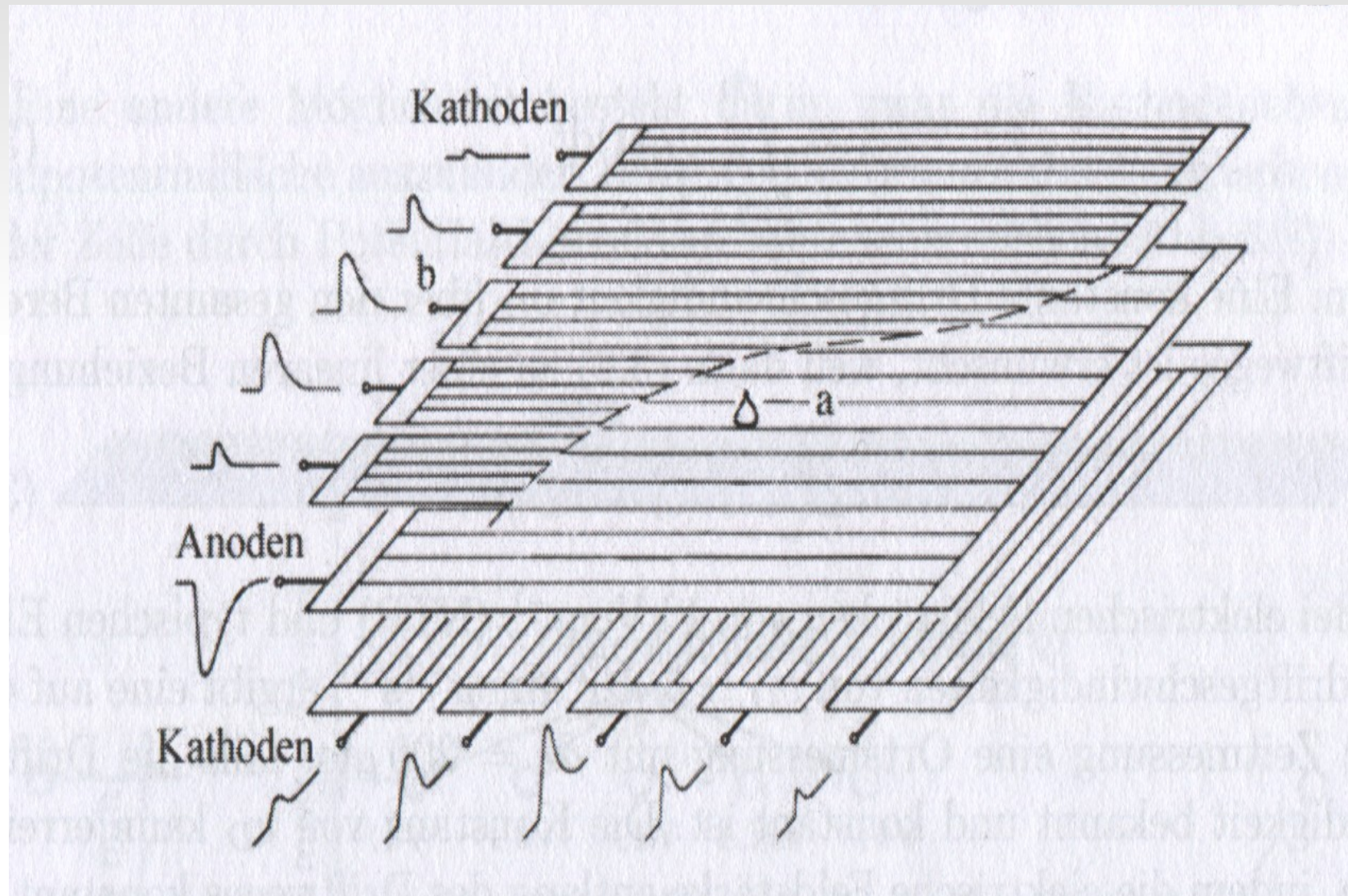


# Fig 4.4b: Ortsauflösung, MWPC-Kathodenauslese



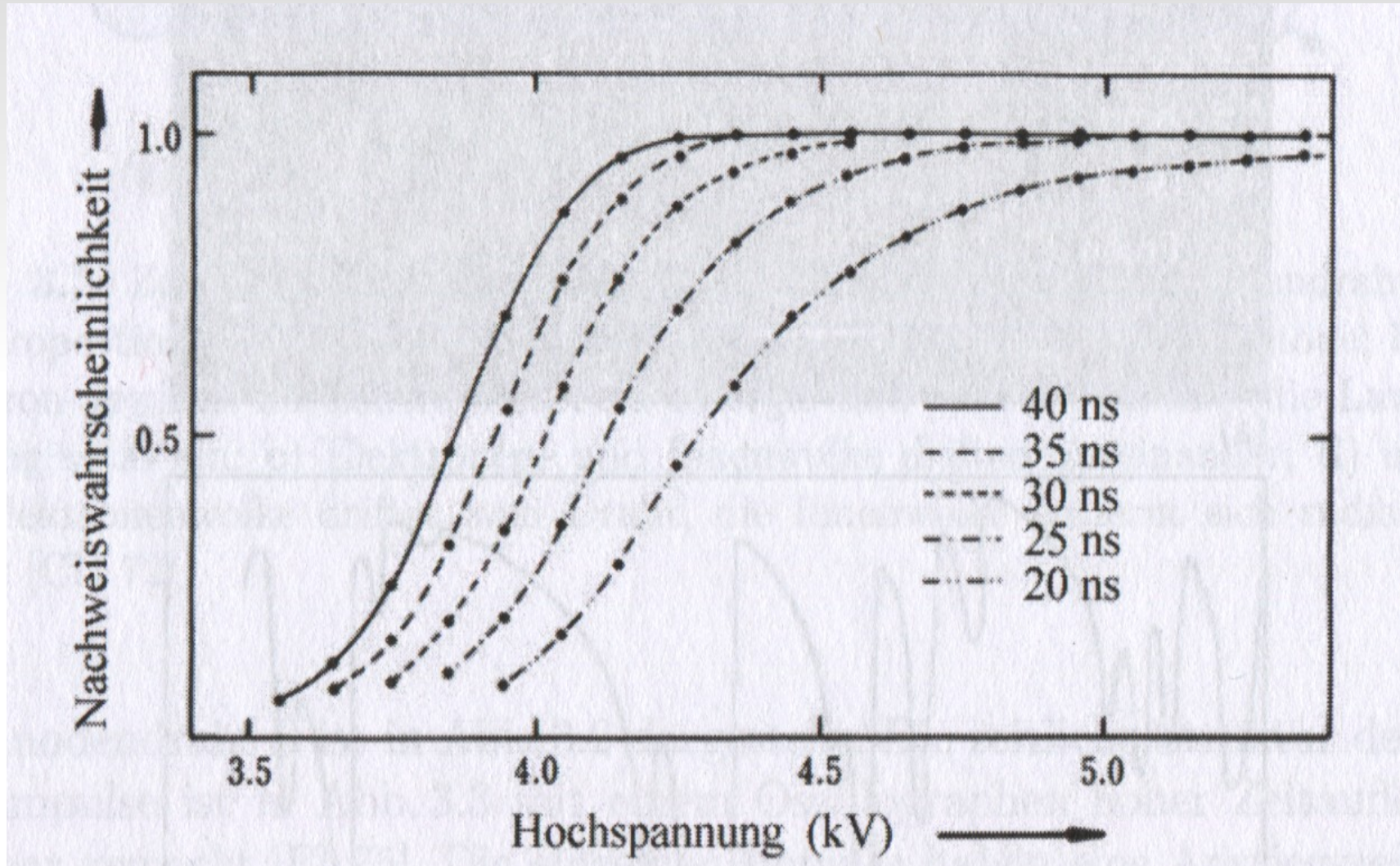


# Fig 4.4c: Bi-dimensionale MWPC-Kathodenauslese



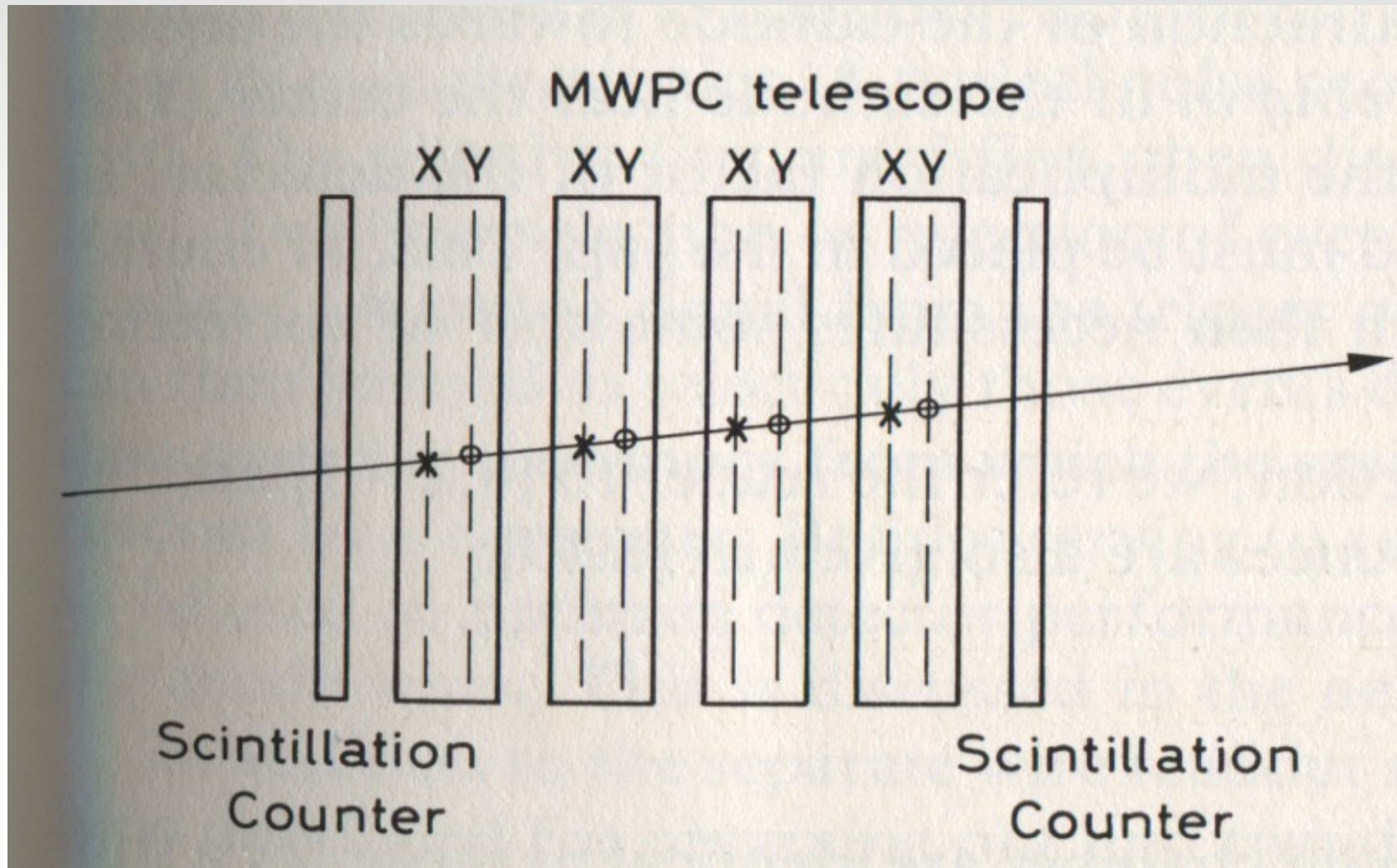


# Fig 4.5: Effizienz einer MWPC

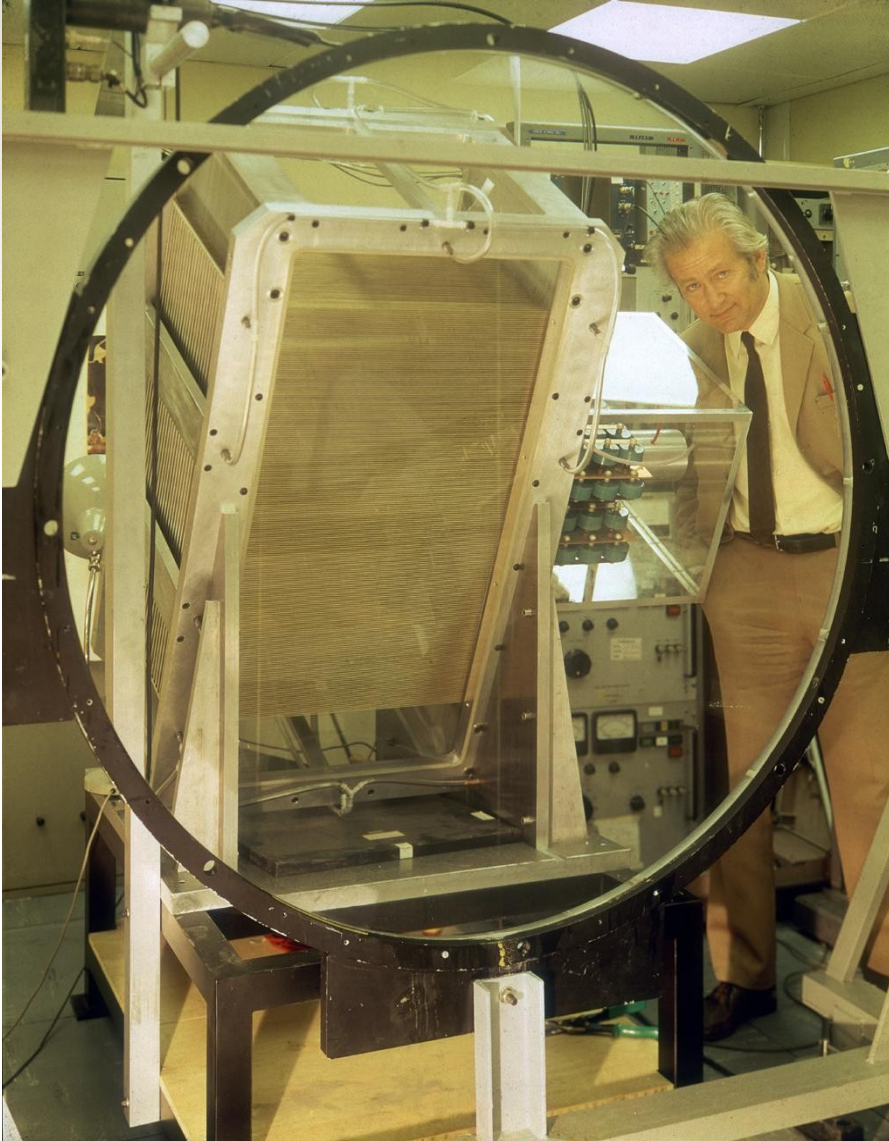




# Fig 4.6: MWPC-Teleskop



# Fig 4.7: Erste MWPC (Charpak 1968)



1992





# Fig 4.8: ATLAS TGCs and CSCs

